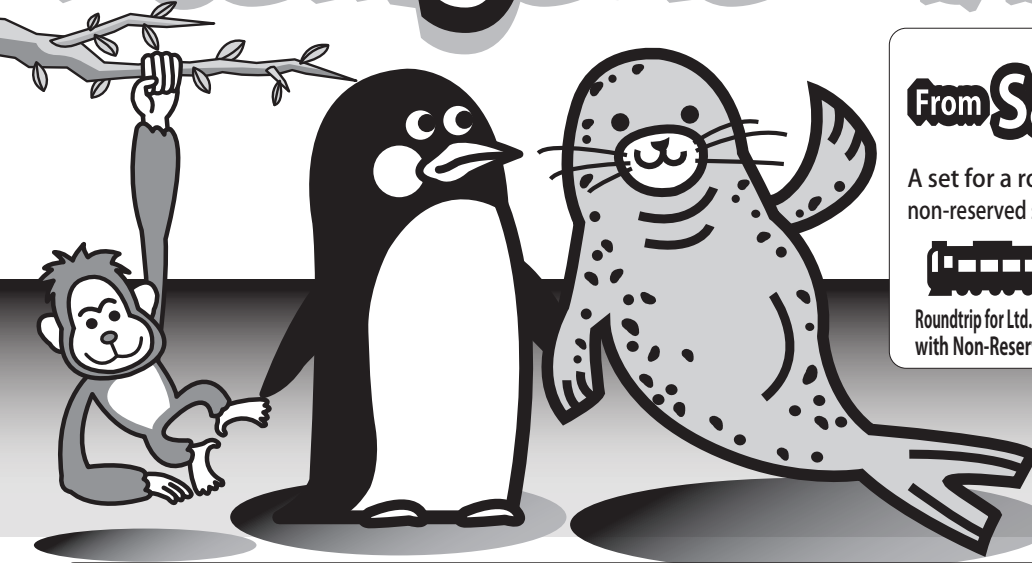


Asahiya Zoo Ticket



Adult (12yrs.and over)
From Sapporo 6,130 yen

A set for a roundtrip ticket for the limited express train with non-reserved seat and for the bus ticket and the Asahiya Zoo ticket.



Roundtrip for Ltd. Exp. train with Non-Reserved seat



Roundtrip for bus (Asahikawa Sta. - Asahiya Zoo)



Asahiya Zoo ticket

By adding **520 yen**(one way), a reserved seat for the limited express train is available.

※Child fare below. ↓

For Junior high students and under (free admission) and the Zoo Passport holders.

Asahiya Doubutsubuen Akusesu Kippu 旭山動物園アクセスきっぷ

Asahiya Zoo Access Ticket
 (without a zoo ticket)



Roundtrip for Ltd. Exp. train with Non-Reserved seat



Roundtrip for bus (Asahikawa Sta. - Asahiya Zoo)

From Sapporo

Child (6-11yrs.)
2,700 yen

Adult (12yrs.or more)
5,410 yen



Conditions for "Asahiya Zoo Ticket" and "Asahiya Zoo Access Ticket(without a zoo ticket)"

●Sales period/ until Apr. 9, 2017 ●Period of Use/ Apr.29,2016-Apr.12,2017 ●Validity period/ 4 days

※Excluded starting date for use: Nov.4-10,Dec.30,2016-Jan.1,and Apr.10-12,2017

○ Closed dates of the zoo: Nov.4-10, Dec. 30,2016 - Jan. 1, 2017. Be aware of the validity dates to avoid the closed date of the zoo. ○ These tickets are valid for a roundtrip by Ltd. Exp. train with unreserved seat between Sapporo and Asahikawa. ○ A roundtrip for Asahikawa Denkiidou Bus between Asahikawa Station and Asahiya Zoo is included. ○ The ticket is void when you make a stopover.

Timetable for Sapporo - Asahikawa - Asahiya Zoo

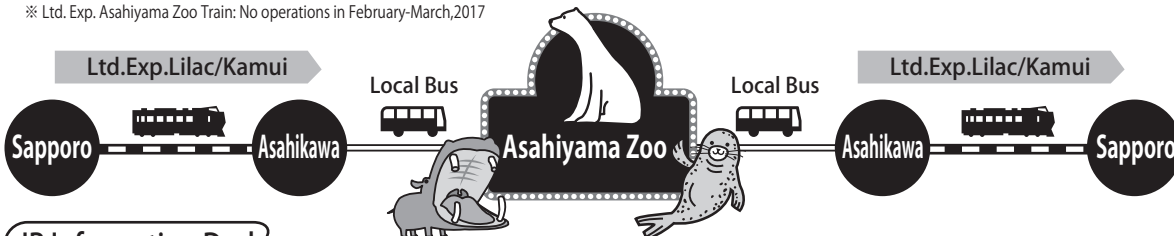
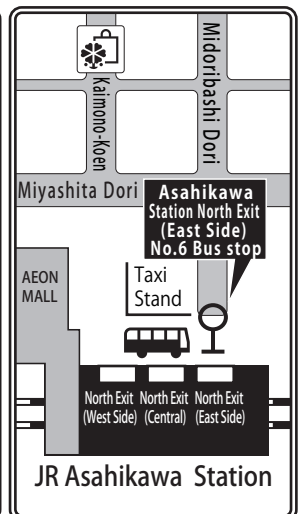
* Shown schedules are for major time zone. Schedules may change without previous notice.

To Zoo			To Sapporo				
Train Time Schedule Sapporo→Asahikawa			Train Time Schedule Asahikawa→Sapporo				
Train	Lv. Sapporo	Ar. Asahikawa	Asahikawa Denkiidou Bus Asahikawa Sta. ⇄Asahiya Zoo (Nov. 11, 2016 - Apr. 9, 2017)				
Ltd.Exp.Lilac No.1	6:35	8:00	No. Asahikawa Sta. Zoo	No. Zoo Asahikawa Sta.	Ltd.Exp.Kamui No.20	11:00	12:25
Ltd.Exp.Lilac No.3	7:49	9:14	④1 8:40 9:26※1	④1 11:30 12:13	Ltd.Exp.Lilac No.22	12:00	13:25
Ltd.Exp.Lilac No.5	8:30	9:55	④1 9:40 10:23	④7 12:00 12:41	Ltd.Exp.Lilac No.24	13:00	14:25
Ltd.Exp.Kamui No.7	9:00	10:25	④7 10:10 10:51	④1 12:30 13:13	Ltd.Exp.Lilac No.26	14:00	15:25
Ltd.Exp.Kamui No.9	9:30	10:55	④1 10:40 11:23	④7 13:00 13:41	Ltd.Exp.Kamui No.28	14:30	15:55
Ltd.Exp.Lilac No.11	10:00	11:25	④7 11:10 11:51	④1 13:30 14:13	Ltd.Exp.Kamui No.30	15:00	16:25
Ltd.Exp.Lilac No.13	11:00	12:25	④1 11:40 12:23	④7 14:00 14:41	Ltd.Exp.Lilac No.32	16:00	17:25
Ltd.Exp.Lilac No.15	12:00	13:25	④7 12:10 12:51	④1 14:30 15:13	Ltd.Exp.Lilac No.34	16:30	17:55
Ltd.Exp.Kamui No.17	13:00	14:25	④1 12:40 13:23	④7 15:00 15:41	Ltd.Exp.Lilac No.36	17:00	18:25
			④7 13:10 13:51	④1 15:30 16:13	Ltd.Exp.Lilac No.38	17:30	18:55
			④1 13:40 14:23	④7 16:00 16:43	Ltd.Exp.Lilac No.40	18:00	19:25
			④7 14:10 14:51		Ltd.Exp.Kamui No.42	18:30	19:55

※1 This bus arrives the zoo one hour before the open hour (10:30).

※The bus service in the Night Zoo period (Feb. 7-12) is extended according to the closing time.

※ Ltd. Exp. Asahiya Zoo Train: No operations in February-March,2017



JR Information Desk

Drop by to purchase or exchange various tickets. ●JR Sapporo Station 8:30-19:00 ●JR New Chitose Airport Station 8:30-19:00

Asahiya Zoo Information

《 Winter Period 》
 November 11, 2016 - April 9, 2017
 10:30 ~ 15:30 (Entry until 15:00)

《 Night Zoo 》
 February 7-12
 10:30 ~ 20:30 (Entry until 20:00)

○ Days Closed ○
 November 4 - 10,
 December 30, 2016 - January 1, 2017