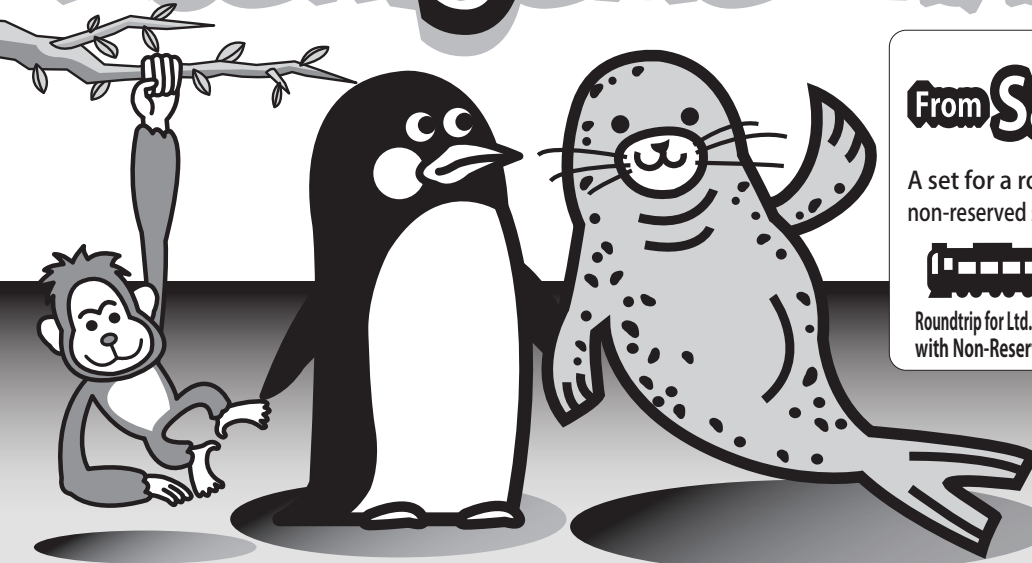


Asahiya Zoo Ticket



Adult (16yrs.and over)
From Sapporo 6,130 yen

A set for a roundtrip ticket for the limited express train with non-reserved seat and for the bus ticket and the Asahiya Zoo ticket.

+ + **TICKET**

Roundtrip for Ltd. Exp. train with Non-Reserved seat Roundtrip for bus (Asahikawa Sta. - Asahiya Zoo) Asahiya Zoo ticket

By adding **520 yen**(one way), a reserved seat for the limited express train is available.

※Child fare below. ↓

For Junior high students and under (free admission) and the Zoo Passport holders.

Asahiya Doubutsuben Akusesu Kippu 旭山動物園アクセスきっぷ

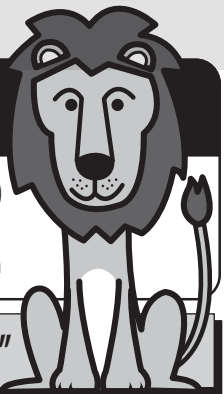
Asahiya Zoo Access Ticket
 (without a zoo ticket)

+

Roundtrip for Ltd. Exp. train with Non-Reserved seat Roundtrip for bus (Asahikawa Sta. - Asahiya Zoo)

From Sapporo

Child (6-11yrs.) **2,700 yen** Adult (12yrs.or more) **5,410 yen**



Conditions for "Asahiya Zoo Ticket" and "Asahiya Zoo Access Ticket(without a zoo ticket)"

●Sales period/ until Apr. 8, 2018 ●Period of Use/ Apr.29,2017-Apr.11,2018 ●Validity period/ 4 days

※Excluded starting date for use: Nov.4-10,Dec.30,2017-Jan.1,and Apr.9-11,2018

○ Closed dates of the zoo: Nov.4-10, Dec. 30,2017 - Jan. 1, 2018. Be aware of the validity dates to avoid the closed date of the zoo. ○ These tickets are valid for a roundtrip by Ltd. Exp. train with unreserved seat between Sapporo and Asahikawa. ○ A roundtrip for Asahikawa Denkiidou Bus between Asahikawa Station and Asahiya Zoo is included. ○ The ticket is void when you make a stopover.

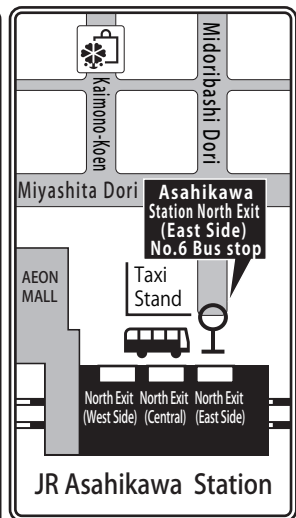
Timetable for Sapporo - Asahikawa - Asahiya Zoo

* Shown schedules are for major time zone. Schedules may change without previous notice.

To Zoo			To Sapporo					
Train Time Schedule Sapporo→Asahikawa			Asahikawa Denkiidou Bus Asahikawa Sta. ⇄Asahiya Zoo (April 29, - November 3, 2017)		Train Time Schedule Asahikawa→Sapporo			
Train	Lv. Sapporo	Ar. Asahikawa	No. Asahikawa Sta.	Zoo	No. Asahikawa Sta.	Train	Lv. Asahikawa	Ar. Sapporo
Ltd.Exp.Lilac No.1	6:35	8:00	④⑦ 8:10	8:53	④⑦ 10:00	Ltd.Exp.Kamui No.20	11:00	12:25
Ltd.Exp.Okhotsk No.1	6:56	8:32	④① 8:40	9:26	④① 10:30	Ltd.Exp.Lilac No.22	12:00	13:25
Ltd.Exp.Soya	7:30	8:58	④⑦ 9:10	9:51	④⑦ 11:00	Ltd.Exp.Lilac No.24	13:00	14:25
Ltd.Exp.Lilac No.3	7:49	9:14	④② 9:25	10:00 ※1	④① 11:30	Ltd.Exp.Lilac No.26	14:00	15:25
Ltd.Exp.Lilac No.5	8:30	9:55	④① 9:40	10:23	④⑦ 12:00	Ltd.Exp.Kamui No.28	14:30	15:55
Ltd.Exp.Kamui No.7	9:00	10:25	④⑦ 10:10	10:51	④① 12:30	Ltd.Exp.Kamui No.30	15:00	16:25
Ltd.Exp.Kamui No.9	9:30	10:55	④② 10:25	11:00 ※1	④⑦ 13:00	Ltd.Exp.Kamui No.32	16:00	17:25
Ltd.Exp.Lilac No.11	10:00	11:25	④① 10:40	11:23	④① 13:30	Ltd.Exp.Lilac No.34	16:30	17:55
Ltd.Exp.Lilac No.13	11:00	12:25	④⑦ 11:10	11:51	④① 14:00	Ltd.Exp.Lilac No.36	17:00	18:25
Ltd.Exp.Lilac No.15	12:00	13:25	④① 11:40	12:23	④⑦ 14:30	Ltd.Exp.Lilac No.38	17:30	18:55
Ltd.Exp.Kamui No.17	13:00	14:25	④⑦ 12:10	12:51	④② 14:45	Ltd.Exp.Lilac No.40	18:00	19:25
			④① 12:40	13:23	④⑦ 15:00	Ltd.Exp.Kamui No.42	18:30	19:55
			④⑦ 13:10	13:51	④① 15:30			
			④① 13:40	14:23	④⑦ 16:00			
			④⑦ 14:10	14:51	④① 16:30			
			④① 14:40	15:23	④⑦ 17:00			
			④⑦ 15:10	15:51	④① 17:30			

※1 Operation Day :Apr.29-May.7,Jul.1-Sep.24
 ※The bus service in the Night Zoo period (Aug. 9-15) is extended according to the closing time.

※ Ltd. Exp. Asahiya Zoo Train: No operations in April-June,2017



Asahiya Zoo Information

April 29 - October 15, 2017
 9:30 ~ 17:15 (Entry until 16:00)

October 16 - November 3, 2017
 9:30 ~ 16:30 (Entry until 16:00)

《Night Zoo》
August 9-15
 9:30 ~ 21:00 (Entry until 20:00)

○ Days Closed ○
 November 4 - 10,
 December 30, 2017 - January 1, 2018



JR Information Desk

Drop by to purchase or exchange various tickets. ●JR Sapporo Station 8:30-19:00 ●JR New Chitose Airport Station 8:30-19:00