

◎Ticket Details

■Sales period/ Until October 28, 2017  
 ■Usable period/ April 29 - October 31, 2017

Valid period is 4 days

Departure Sapporo Sta.

# Furano Biei Rail Ticket

Departure Sapporo Sta.

**¥6,500** [6-11 years old: ¥3,250]

1 If you make a purchase, you will have a set of three tickets; A, B, and the Information ticket.

2 Insert the Ticket A into the automatic ticket checker.

3 When you arrive at your destination, please give the Ticket A to the station staff.



One ride on the Ticket A between Sapporo → Free-ride section

One ride on the Ticket B between the Free-ride section → Sapporo

**Caution**

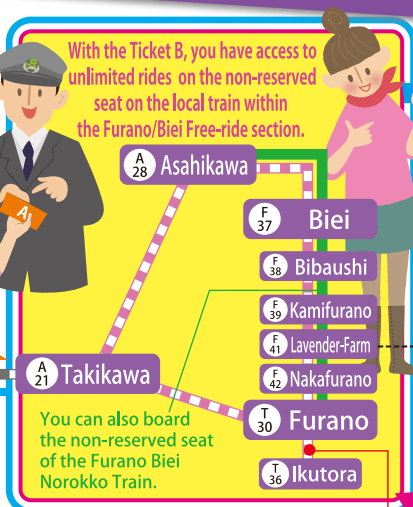
Only one ride per ticket is allowed between Sapporo → Furano/Biei Free-ride section. You cannot ride again even if it is within the valid period.

With the Ticket B, you have access to unlimited rides on the non-reserved seat on the local train within the Furano/Biei Free-ride section.

4 The Ticket B can be used for unlimited rides within the Free-ride section, and return ticket back to the station of origin. It includes both tickets.

5 After the Ticket A is collected, the Ticket B can be used for unlimited rides within the Free-ride section, and the return trip to the station of origin. If you lose this ticket, it cannot be reissued, so please be careful not to lose it.

Installed period: June 10 - September 24, 2017



You can also board the non-reserved seat of the Furano Biei Norokko Train.

\*Service for the Nemuro Line between "Higashi-Shikagoe" and "Shintoku" will be temporarily suspended due to the aftereffects of the typhoon which occurred August, 2016. Please note that passengers cannot travel on this portion of the line.

**Going Ticket A**

The non-reserved seats on the Ltd. Express Train Ordinary Car between Sapporo → Free-ride section.

One way one time

**Ticket B (Furano/Biei Free-ride section Unlimited Rides + Return Trip) Return**

Unlimited rides on local trains (non-reserved seat) within the Free-ride section. (You can also board the non-reserved seat of the Furano-Biei Norokko Train.)

The non-reserved seats on the Ltd. Express Train Ordinary Car between the Free-ride section → Sapporo.

One way one time

Recommend to customers who use trains only inside Furano/Biei Free-ride section.

\*You can board the non-reserved seat of the Ltd. Express Train Ordinary Car to the Free-ride section one way, once.  
 \*If you get off the train outside of the Free-ride section, your ticket will become void.  
 \*Once you go outside of the Free-ride section from Takikawa Station, you cannot return again.  
 \*Pink dotted lines indicate the Free-ride section. Within this area you can board the Furano-Biei Norokko Train(non-reserved seat), and local trains as many times as you wish.  
 \*If you wish to board the reserved seat section of the Ltd. Express Train between Sapporo and the Free-ride section, you must pay the extra charge of ¥520 one way.

\*Reserved seat on the Furano-Biei Norokko Train is ¥520 extra.  
 \*If you lose your ticket, you will need to purchase a new one.  
 \*There are no refunds for trains that are delayed or suspended, and there are no extensions on the valid period within the Free-ride section.

Departure Asahikawa Sta.

**Lavender One Day Ticket**

Leaves from Asahikawa Station and is handy for day trips to Biei and Furano.

Valid period is 1 day

■Sales period/ Until October 31, 2017  
 ■Usable period/ April 29 - October 31, 2017

**¥2,500** [6-11 years old: ¥1,250]

Unlimited rides on local trains within the Free-ride section. (You can also board the Unreserved seat of the Furano-Biei Norokko Train.)

## 3 Which trains and buses do you recommend?

For a convenient and pleasurable trip, take the Furano Lavender Express which connects Sapporo and Furano in just two hours without transfers, and the Furano-Biei Norokko train which takes you through some of the most scenic areas of Furano and Biei!! If you utilize the Biei View Bus and Round Trip Bus Tours from Biei and Furano Sta., you can tour around the popular tourist sights, and enjoy the most beautiful landscapes of the area at ease.

It's just 2 hours from Sapporo to Furano, the land of flowers!

# Furano Lavender Express

Service period ■ No.3,4 ■ No.1,2,3,4

June 2017							July 2017							August 2017							September 2017											
Sun	Mon	Tue	Wed	Thu	Fri	Sat	Sun	Mon	Tue	Wed	Thu	Fri	Sat	Sun	Mon	Tue	Wed	Thu	Fri	Sat	Sun	Mon	Tue	Wed	Thu	Fri	Sat					
				1	2	3						1																				
4	5	6	7	8	9	10	2	3	4	5	6	7	8	6	7	8	9	10	11	12	3	4	5	6	7	8	9					
11	12	13	14	15	16	17	9	10	11	12	13	14	15	13	14	15	16	17	18	19	10	11	12	13	14	15	16					
18	19	20	21	22	23	24	16	17	18	19	20	21	22	20	21	22	23	24	25	26	17	18	19	20	21	22	23					
25	26	27	28	29	30		23/30	24/31	25	26	27	28	29	27	28	29	30	31		24	25	26	27	28	29	30						

	Sapporo Dep.	Furano Arr.
No. 1	7:52	9:49
No. 3	9:07	11:07
	Furano Dep.	Sapporo Arr.
No. 2	15:20	17:22
No. 4	16:51	18:46



Reserved seats on Ltd. Express trains will cost an extra ¥520, plus your Furano Biei Rail Ticket.

**Lavender ice cream and Original cell phone strap**

[Sales on Board]  
 Sold on Furano Lavender Express [No.2, No.3, No.4]  
 [On-board Sales Period]  
 June 10,11,17,18 and June 24 - Aug. 20, 2017

[Price]  
 Lavender ice cream ¥320 (with tax)  
 Original cell phone strap ¥800 (with tax)

\*Sales may be suspended without prior notice.



# Ltd. Exp. Kamui/ Ltd. Exp. Lilac

The Ltd. Exp. Kamui/Ltd. Exp. Lilac connects Sapporo and Asahikawa in just 1 hour and 25 minutes, and you can transfer to the Furano-Biei Norokko train. The model courses C and D on the back utilize the Ltd. Exp. Kamui/Ltd. Exp. Lilac train. There are many non-reserved seats, and is quite convenient for those who use the Furano Biei Rail Ticket.



Ltd. Exp. Lilac

Ltd. Exp. Kamui

The Furano Lavender Express is expected to be extra crowded during July and August. We suggest that you ride the Ltd. Exp. Kamui/Ltd. Exp. Lilac which has a larger unreserved seat section.