

Between Sapporo - Hakodate



Increase in limited express trains during Busy Seasons

The number of Ltd. Exp. Hokuto trains running between Sapporo and Hakodate will be increased temporarily in anticipation of an increase of passengers during the Busy Seasons.

Every year, extra trains tend to be relatively vacant compared to other trains. For this reason, we kindly ask that passengers use the following extra trains if they plan to ride JR trains between Sapporo and Hakodate during events such as the Busy Seasons.



1 Ltd. Exp. Hokuto 84 (Dep.Sapporo 7:44 , Dep.Noboribetsu 9:06, Dep.Toya 9:54, Arr.Hakodate 12:07)

Seasonal Service: July 14,15, August 10-13,2018



- ① Those who want to stay in Sapporo, and enjoy lunch and sightseeing in Hakodate the next day. (Early checkout)
- ② Those who want to stay in Noboribetsu/Toya, and enjoy lunch and sightseeing in Hakodate the next day. (Early checkout)

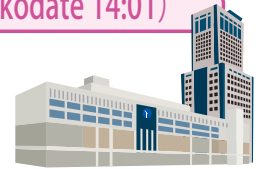


2 Ltd. Exp. Hokuto 88 (Dep.Sapporo 9:53, Dep.Noboribetsu 11:10, Dep.Toya 11:52, Arr.Hakodate 14:01)

Seasonal Service: August 10-15,2018



- ① Those who want to stay near Sapporo Station, and go to Noboribetsu/Toya/Hakodate the next day.
- ② Those who want to stay in Noboribetsu and Toya, and go to Hakodate the next day.



3 Ltd. Exp. Hokuto 91 (Dep.Hakodate 12:45 , Dep.Toya 14:51 , Dep. Noboribetsu 15:34 , Arr. Sapporo 16:56)

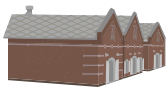
Seasonal Service: July 14-16, August 4,5,10-19, September 3-9,15-17,22-24,2018



Those who want to stay in Hakodate, and on the next day, enjoy lunch in Hakodate, and head to Toya / Noboribetsu/ Sapporo.

4 Ltd. Exp. Hokuto 95 (Dep.Hakodate 15:04, Dep.Toya 17:22, Dep.Noboribetsu 18:10, Arr.Sapporo 19:34)

Seasonal Service: August 10-15,2018



Those who want to enjoy their time in Hakodate and then head towards Sapporo.

5 Ltd. Exp. Hokuto 85 (Dep.Hakodate 9:31 , Dep.Toya 11:49 , Dep. Noboribetsu 12:30 , Arr. Sapporo 13:42

Seasonal Service: July 28,2018

Daily Service

Ltd. Exp. Suzuran 5 and 6



- ① Those who want to stay in Noboribetsu, and arrive at their hotel at check-in time, and relax and spend time there.
- ② Those who want to avoid crowded trains for Hakodate and travel with ease and comfort.

Ltd. Exp. Suzuran 6 Sapporo 13:55 Dep.-Noboribetsu 15:09 Arr.

- ① Those who want to stay in Noboribetsu, and enjoy lunch and sightseeing in Sapporo the next day.
- ② Those who want to avoid crowded limited express trains from Hakodate and travel with ease and comfort.

Ltd. Exp. Suzuran 5 Noboribetsu 9:37 Dep.-Sapporo 11:01 Arr.



Avoid the crowds, make a smart travel itinerary, and enjoy train travel!

※For more details please visit the website. <http://www2.jrhokkaido.co.jp/global/pdf/e-timetable20180521.pdf>

