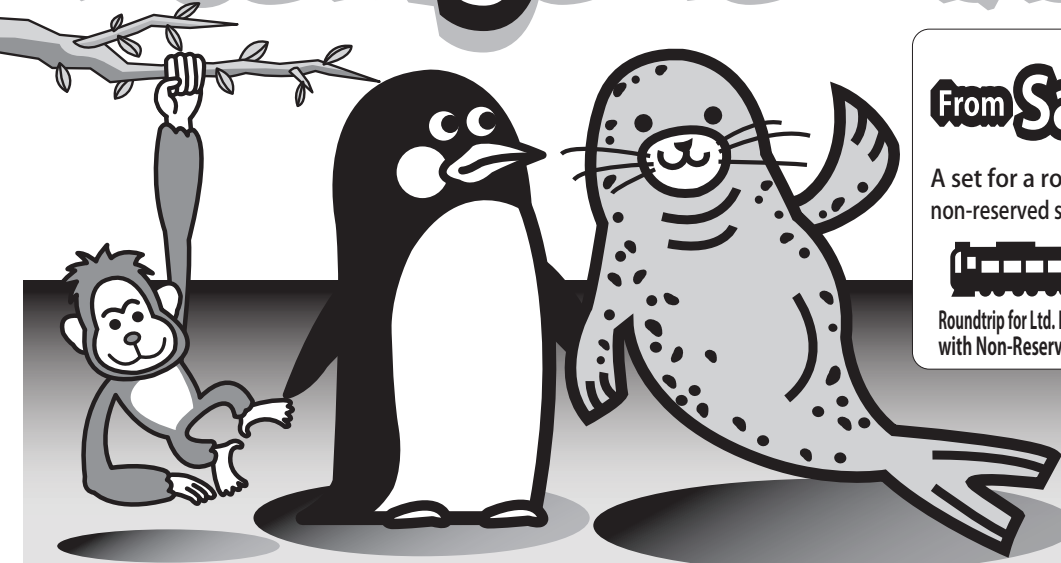


Asahiya Zoo Ticket



Adult (16yrs.and over)
From Sapporo 6,130 yen

A set for a roundtrip ticket for the limited express train with non-reserved seat and for the bus ticket and the Asahiya Zoo ticket.



Roundtrip for Ltd. Exp. train with Non-Reserved seat

Roundtrip for bus (Asahikawa Sta. - Asahiya Zoo)

Asahiya Zoo ticket

By adding **520 yen** (one way), a reserved seat for the limited express train is available.

※Child fare below. ↓

For Junior high students and under (free admission) and the Zoo Passport holders.

Asahiya Doubutsuen Akusesu Kippu 旭山動物園アクセスきっぷ

Asahiya Zoo Access Ticket
 (without a zoo ticket)

Roundtrip for Ltd. Exp. train with Non-Reserved seat + Roundtrip for bus (Asahikawa Sta. - Asahiya Zoo)

From Sapporo

Child (6-11yrs.)
2,700 yen

Adult (12yrs.and over)
5,410 yen



Conditions for "Asahiya Zoo Ticket" and "Asahiya Zoo Access Ticket (without a zoo ticket)"

●Sales period/ until Apr. 7, 2020 ●Period of Use/ Apr.27,2019-Apr.10,2020 ●Validity period/ 4 days

※Excluded starting date for use: Apr.8-26,Nov.4-10,Dec.30,2019-Jan.1,and Apr.8-10,2020

○ Closed dates of the zoo: Apr.8-26,Nov.4-10, Dec. 30,2019 - Jan. 1, and Apr.8-10,2020. Be aware of the validity dates to avoid the closed date of the zoo. ○ These tickets are valid for a roundtrip by Ltd. Exp. train with Non-Reserved seat between Sapporo and Asahikawa. ○ A roundtrip for Asahikawa Denkiidou Bus between Asahikawa Station and Asahiya Zoo is included. ○ The ticket is void when you make a stopover.

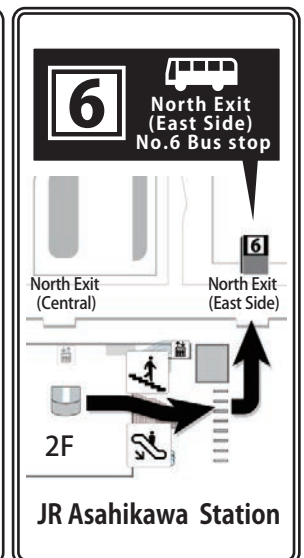
Timetable for Sapporo - Asahikawa - Asahiya Zoo

* Shown schedules are for major time zone. Schedules may change without previous notice.

To Zoo			To Sapporo					
Train Time Schedule Sapporo→Asahikawa			Asahikawa Denkiidou Bus Asahikawa Sta. ↔ Asahiya Zoo (April 27,2019-November 3,2019)			Train Time Schedule Asahikawa→Sapporo		
Train	Lv. Sapporo	Ar. Asahikawa	No. Asahikawa Sta.	Zoo	Asahikawa Sta.	Train	Lv. Asahikawa	Ar. Sapporo
Ltd.Exp.Lilac No.1	6:35	8:00	41	7:40	8:27	Ltd.Exp.Lilac No.24	13:00	14:25
Ltd.Exp.Okhotsk No.1	6:56	8:32	47	8:10	8:54	Ltd.Exp.Lilac No.26	14:00	15:25
Ltd.Exp.Soya	7:30	8:58	41	8:40	9:27	Ltd.Exp.Kamui No.28	14:30	15:55
Ltd.Exp.Lilac No.3	7:49	9:14	47	9:10	9:49	Ltd.Exp.Kamui No.30	15:00	16:25
Ltd.Exp.Lilac No.5(*)	8:30	9:55	41	9:40	10:22	Ltd.Exp.Kamui No.32	16:00	17:25
Ltd.Exp.Kamui No.7	9:00	10:25	42	10:05	10:40※1	Ltd.Exp.Lilac No.34	16:30	17:55
Ltd.Exp.Kamui No.9	9:30	10:55	47	10:10	10:49	Ltd.Exp.Lilac No.36	17:00	18:25
Ltd.Exp.Lilac No.11	10:00	11:25	41	10:40	11:22	Ltd.Exp.Lilac No.38(*)	17:30	18:55
Ltd.Exp.Lilac No.13	11:00	12:25	47	11:10	11:49	Ltd.Exp.Lilac No.40	18:00	19:25
Ltd.Exp.Lilac No.15	12:00	13:25	41	11:40	12:22	Ltd.Exp.Kamui No.42	18:30	19:55
			47	12:10	12:50			
			41	12:40	13:23			
			47	13:10	13:50			
			41	13:40	14:23			
			47	14:10	14:50			
			41	14:40	15:23			
			42	15:00	15:40※1			
			47	15:10	15:50			
			41	15:40	16:28			
			47	16:10	16:55			
			41	16:40	17:28			
			47	17:10	17:55			
			41	17:40	18:28			

(*) indicates trains operating as the Ltd. Exp. Lilac Asahiya Zoo Train from June to September. Please see the reverse side for dates of operation.

※1 Operation Day : April 27-May 6, July 13-September 23,2019



JR Information Desk

Drop by to purchase or exchange various tickets. ●JR Sapporo Station 8:30-19:00 ●JR New Chitose Airport Station 8:30-19:00

Asahiya Zoo Information

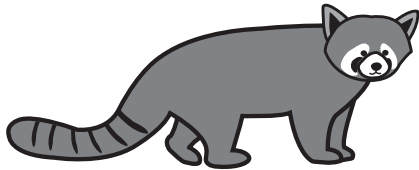
April 27- October 15, 2019
 9:30 ~ 17:15
 (Entry until 16:00)

October 16- November 3, 2019
 9:30 ~ 16:30
 (Entry until 16:00)

Ltd. Exp. Lilac Asahiyama Zoo Train



Ltd. Exp. Lilac No.5 and No.38 trains running between Sapporo and Asahikawa will operate as Ltd. Exp. Lilac Asahiyama Zoo train during some periods from June to September!



For more details, please see our website.

http://www2.jrhokkaido.co.jp/global/english/travel/lilac_asahiyamazoo/index.html

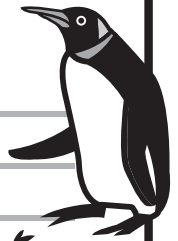
Service period

June 1,2,8,9,15,16,22,23,29,30

July 6,7,13,14,15,20,21,27,28

August 3,4,17,18,24,25,31

September 1



Train schedule

Sapporo (Lv. 8:30) ▶ Asahikawa (Ar. 9:55)

Asahikawa (Lv. 17:30) ▶ Sapporo (Ar. 18:55)

■ Stop at Iwamizawa, Bibai, Sunagawa, Takikawa and Fukagawa.

*Train cars and schedules for Ltd. Exp. Lilac Asahiyama Zoo Train are the same as Ltd. Exp. Lilac No.5 and No.38 trains.

“Asahiyama Zoo Ticket” and “Asahiyama Zoo Access Ticket (without a zoo ticket)” can be purchased at “reserved seat ticket vending machine”!

Just place the QR code in front of the reader and you can get tickets without lining up at the ticket counter!!

*“Reserved seat ticket vending machine” is an automatic ticket vending machine that you can buy JR tickets of all Japan by cash or credit card. These zoo tickets can be purchased only with this type of ticket vending machine.



1 Select “Read QR code” on the first screen

2 Place the QR code in front of the reader

3 Select boarding date

Please place the QR code in front of the reader at “Reserved seat ticket vending machine”.

Please place the QR code in front of the reader at “Reserved seat ticket vending machine”.

Asahiyama Zoo Ticket
[16yrs.and over]

4 Select number of passengers

5 Payment (Credit card/Cash)

*Some ticket vending machines only accept credit cards.

Asahiyama Zoo Access Ticket
(without a zoo ticket)